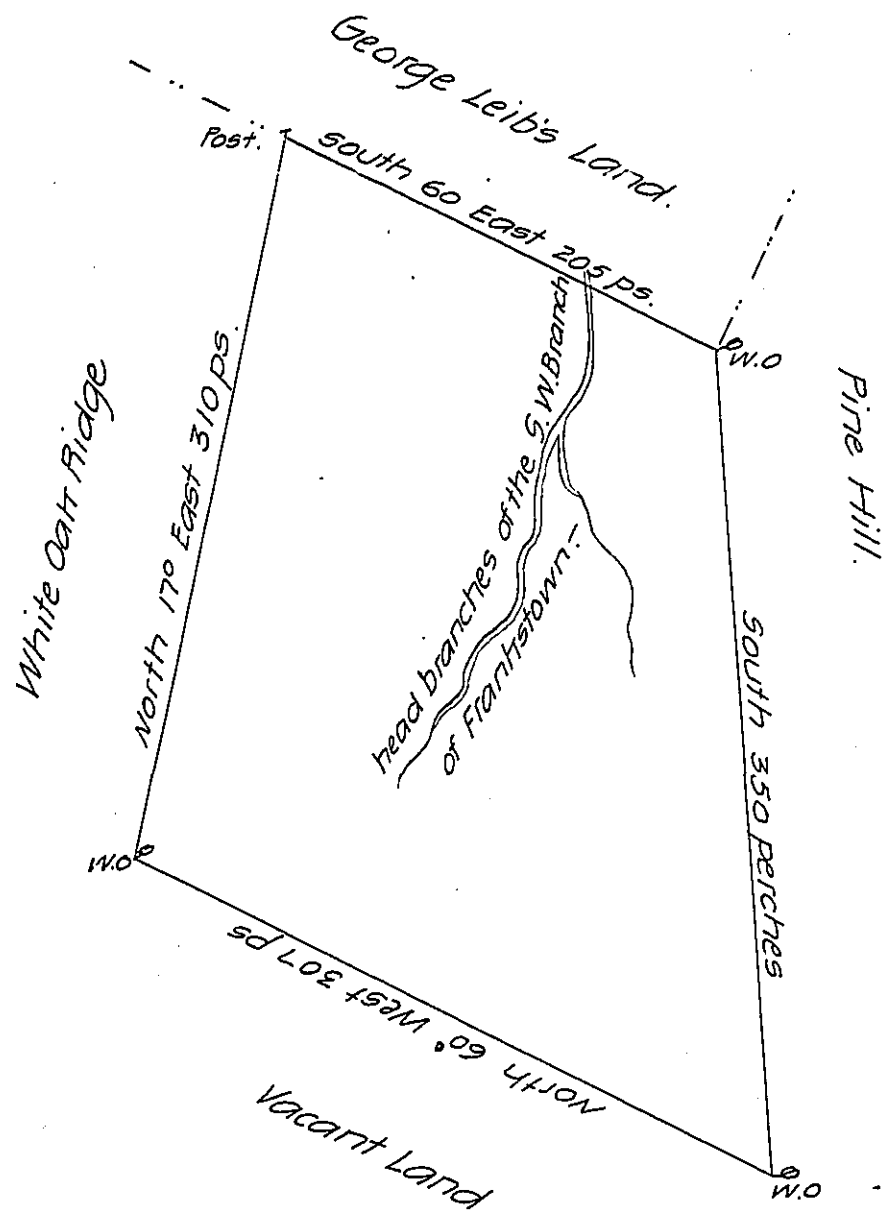


FORM NO. 1.



A Draught of a Tract of Land situate on the heads of the South West branch of Frankstown branch of Juniata River in the County of Cumberland, containing four hundred and fifty three acres and a quarter and the usual allowance of six acres P. Ct. for roads & Ca. Surveyed the 30th day of September 1766 for Edward Evans in pursuance of an order dated 1st August 1766 and numbered 29.

P. Richard Tea. Dep^y Survey^r.

To John Luttrell Esqr.

Surveyor General

IN TESTIMONY that the above is a copy of the original remaining on file in the Department of Internal Affairs of Pennsylvania, made conformably to an Act of Assembly approved the 16th day of February 1833, I have hereunto set my hand and caused the Seal of said Department to be affixed at Harrisburg, this twenty-first day of August 1907

Nancy Howell
Secretary of Internal Affairs.